

**LAKE SHORE HOSPITAL AUTHORITY
BOARD OF TRUSTEES
Minutes - Special Meeting
June 13, 2022, 5:15 p.m. (following Regular Meeting)**

This meeting was conducted as a public meeting and a virtual meeting.

Present: Brandon Beil, Chair
Stephen M. Douglas, Vice-Chair

Lory Chancy – Secretary/Treasurer
Don Kennedy, Trustee

Absent:

Also

Present: Dale Williams, Executive Director
Fred Koberlein Sr., Attorney
Dwayne Cunningham, Director of Facilities
Garrett Morrison
Stew Lilker, Columbia Cty. Observer
Don Savoie, Meridian
Richard Anderson, Meridian
Teresa Jenkinson, Meridian CFO
Sylvester Warren
Karl Plenge, NOC
Jill Adams, CEO, HCA Florida
Richard Powell, Accountant

Sonja Markham, LSHA Staff
Austin Evans
Destiny Evans
Matthew Ganskop
Shoacb Baska, Meridian
Audre J.W. Ruise
Lauren Cohn, Meridian
Davion Jones
Vanessa George
Morgan McMullen
Samuel Boadi, HCA Florida
Cynthia Watson, LSHA Staff

8 participants participated in the LSHA Virtual Special Board Meeting.

CALL TO ORDER

Chairman Beil called the in person/virtual Special Meeting to order at 5:32 pm. Chairman Beil stated there were no additions/deletions to the agenda.

NEW BUSINESS

The purpose of the Special Meeting is to discuss and to take possible action on the Statement of Interest proposals (2nd offer) from parties interested in utilizing The Lake Shore Hospital Campus (all or part) to provide medical care/or other services to the citizens of Columbia County through a partnership with the Authority.

Presentation from Meridian Behavioral Healthcare

Don Savoie
Lauren Cohn
Richard Anderson

Handouts provided (attached to meeting minutes)

Trustees asked various questions to the presenters.

INDIVIDUAL APPEARANCES

Mr. Stew Lilker and Sylvester Warren. Public comment by Mrs. Barbara Lemley over Zoom.

BOARD MEMBER COMMENTS

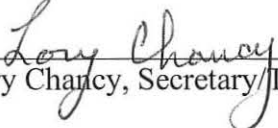
There were none.

Mr. Dale Williams informed the Trustees the June 15, 2022, meeting is cancelled, and the next Special meeting will be Thursday, June 23, 2022.

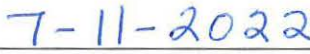
Chairman Beil called for a Motion to adjourn meeting. **Motion** by Mr. Stephen Douglas to adjourn, **Second** by Mrs. Lory Chancy. All in favor. **Motion carried.**

Meeting adjourned.

Respectfully submitted,



Lory Chancy, Secretary/Treasurer



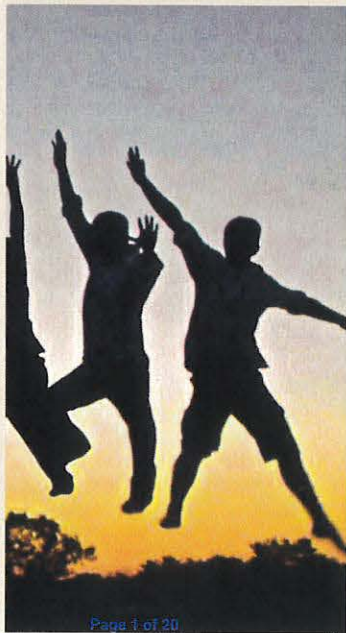
Date of Approval



Meridian Behavioral Healthcare
at
Lakeshore Hospital



We are here to help.



Page 1 of 20



**#More moments
like these!**

Meridian

- Meridian has been providing services in North Central Florida since 1971.
- In 2022, Meridian celebrates 50 years of operations and continues to grow to meet the ever-growing needs of our communities
- Meridian provides services utilizing evidence-based approaches to the treatment of mental illnesses and substance use disorders. Our services also address the social determinants known to adversely affect healthcare outcomes such as housing, employment and medical care.
- Meridian currently has offices in 13 counties and provides services to residents from most all of Florida. Outreach and treatment services touch over 36,000 annually with 430,000 services to individuals.
- Meridian's expenditures for services last year were over \$55 million. We employ 650 individuals from across the region.



Licensing and Accreditation

- Currently, Meridian has been accredited through the Commission on Accreditation of Rehabilitation Facilities (CARF) for over 17 years in Behavioral and Opioid Treatment Programs, obtaining the best possible outcome of a 3-year accreditation during the most recent survey in 2021.
- 55 Substance Abuse licenses have been granted by the Department of Children and Families
- 6 Licenses has been given by The Agency for Health Care Administration (AHCA) for the following programs:
 - Crisis Stabilization Unit
 - Residential Treatment Facilities
 - Health Care Clinics

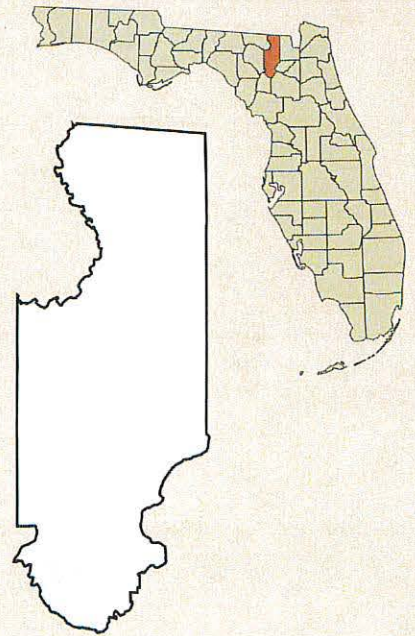


Community Needs & Information

- According to 2019 WellFlorida Community Needs Assessment, *"In 2017, Columbia County residents visited emergency rooms for mental health reasons at rates higher than for the state as a whole."*

-2019 Columbia County Health Improvement Plan by WellFlorida Council.

- According to Mental Health America, nearly 2.9 million Florida adults -about 17% of the population have some form of mental illness.
- The last two years have led to an increase in people seeking help for mental illness, particularly anxiety and depression.



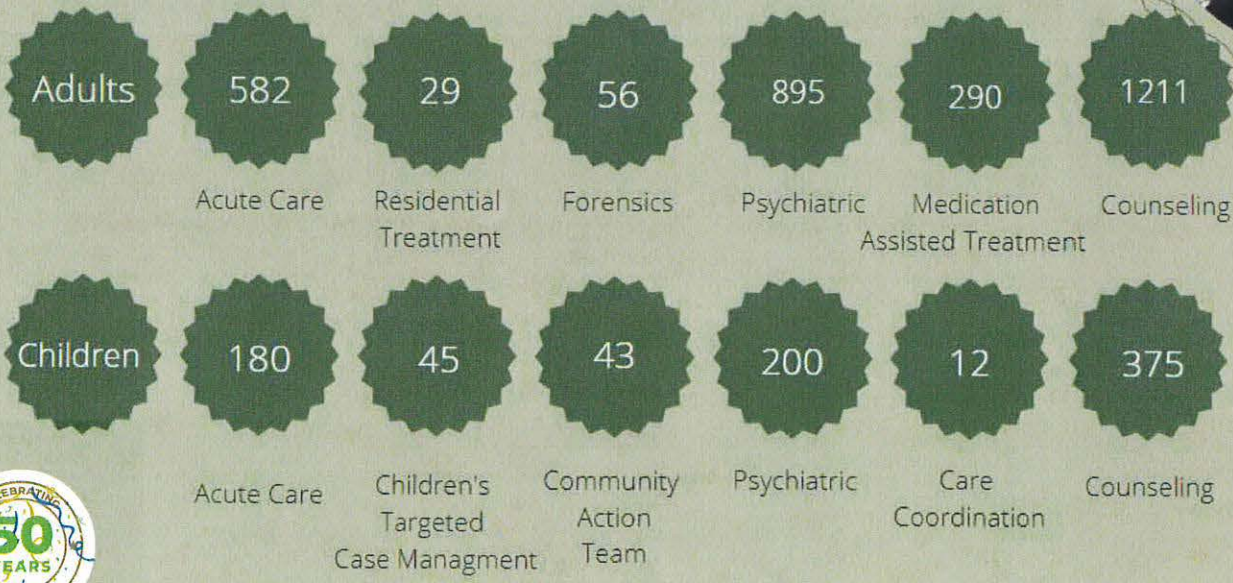
Meridian in Columbia County

- Meridian currently serves as the Central Receiving Facility for Columbia County and plans to expand this best practice model to Alachua County.
- With plans to open a 16-bed residential treatment facility in July 2022, Williams Manor by Meridian will provide another level of care addressing the needs of the community. This facility among others will be accredited by Commission on Accreditation of Rehabilitation Facilities (CARF).
- Meridian has added Primary Care Services in Columbia County in 2021 and continues to expand on this service to meet the growing demands of the community.



Services We Provide to Columbia County Residents

July 2021 through May 2022



Improved functioning and reduction of symptoms

75% of Adults

75% of Children

National Benchmarks

- Recovery rates for severe mental illnesses range from 40-60%
- Recovery rates for addiction range from 40-50%
- Recovery rates for diabetes, hypertension, and other chronic illness range from 40-60%



95%

Would return to Meridian if they experience behavioral health needs in the future



96%

Indicate treatment was helpful

94%

Have become more independent

96%

Felt Meridian staff truly cares if they get better



96%

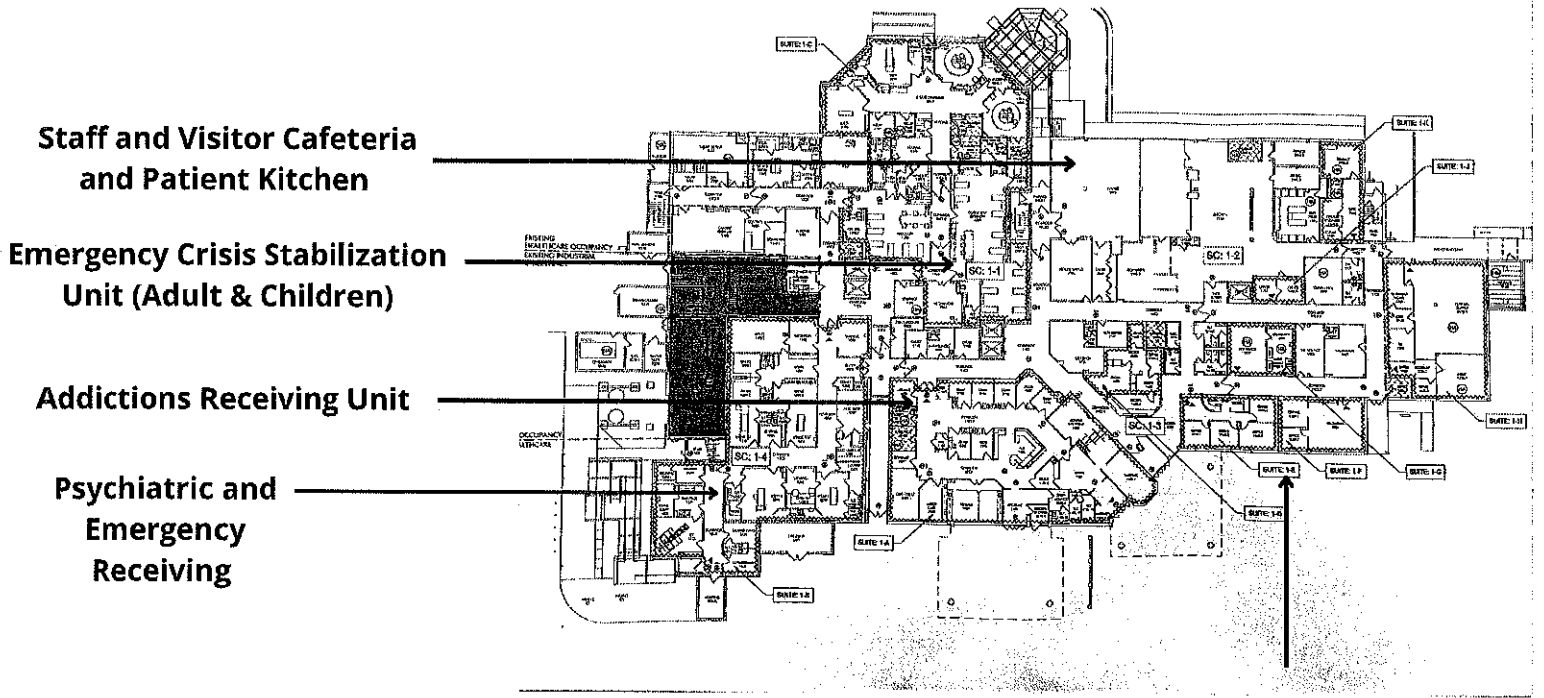
Would recommend Meridian to others

Meridian at Lakeshore Hospital

- Approximately 117,000 square feet of planned space for in-patient and residential care for clients with varying levels of acuity.
- Meridian Behavioral Healthcare plans on utilizing the hospital building and surrounding grounds offered at Lakeshore Hospital to expand continuum of care that is a growing need for our community
- Meridian Behavioral Healthcare has outlined staffing allocations as well as an operational plan for the foreseeable future.
- Currently, Meridian does not have or anticipate to have any limitations or restrictions from complying with the Lakeshore Hospital Authority in the transitory process.



First Floor



First Floor

Phase One

Psychiatric and Addictions Crisis / Emergency Receiving -SC 1-4

Moved from Current Campus

Baker Act and Marchman Act Receiving (Personal & Law Enforcement)
Walk-In

Hours of Operation: 24hours/7days for 365 Calendar Days

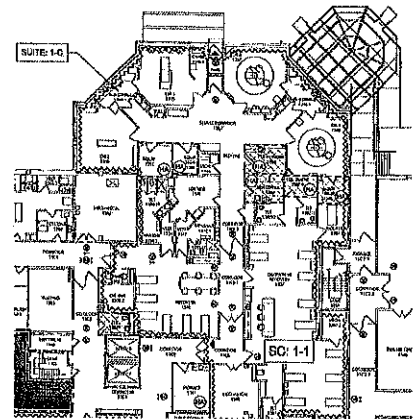
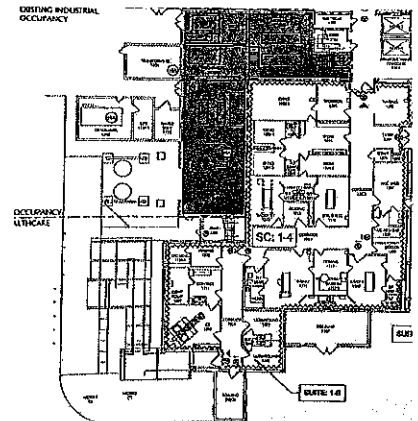
Emergency Crisis Stabilization Units (Adult and Children) – SC 1-1

Moved from Current Campus

Number of beds (expected) - 30

Average Length of Stay ~ 3.5 days

An in-patient facility that provides short term care and stabilization to individuals experiencing a mental health crisis.



First Floor

Phase Two

Addictions Receiving Unit - New

10+ Beds

Medically supervised withdrawal

Average Length of Stay: 5 days

Transfer to Residential / Stepdown Care

A medically supervised, inpatient, short-term, acute care detoxification and stabilization facility for adults with significant substance impairment or co-occurring mental health and substance abuse disorders.

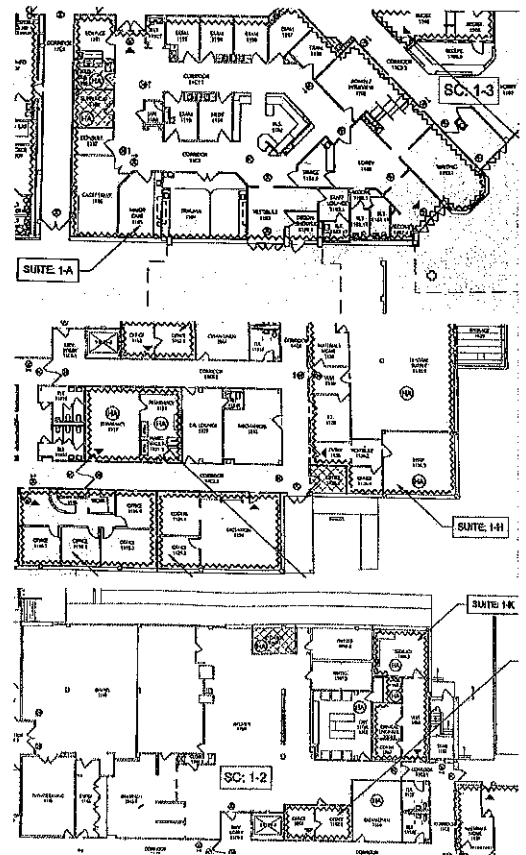
Primary Care & Pharmacy - Suites 1-D-J

Hours of Operation 8am - 5pm

(Weekdays) w/ 24 hour, 7 day On-call physician support

Medical Support for Patients on the Units

Staff and Visitor Cafeteria and Patient Kitchen

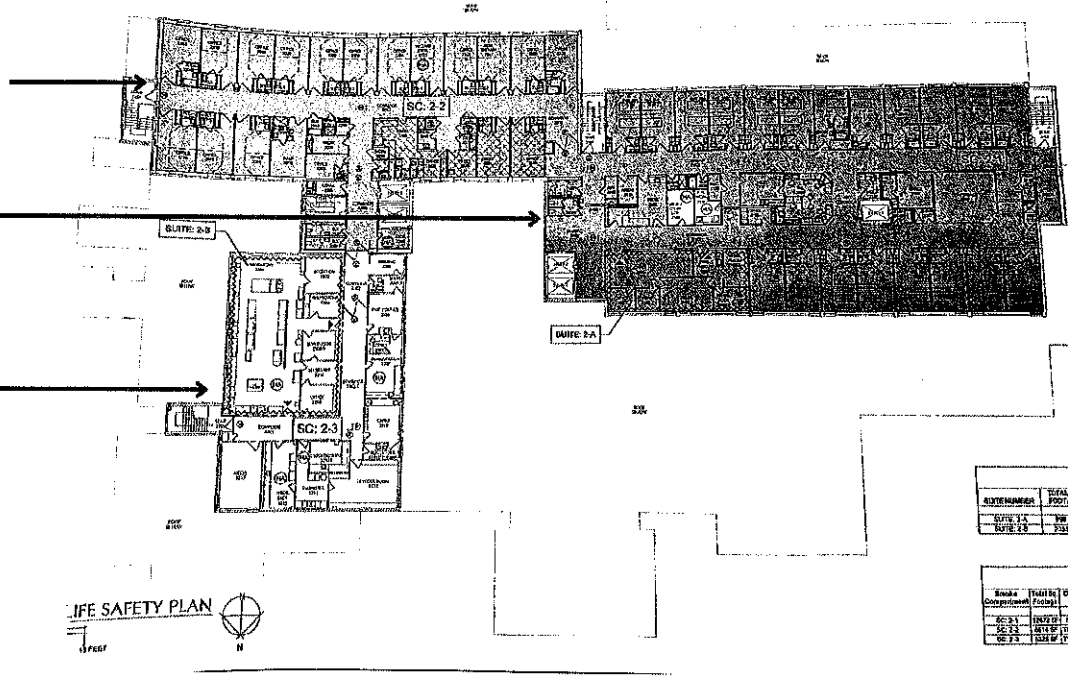


Second Floor

Short-Term Residential Treatment (SRT)

Forensic Beds

Counseling Offices



AREA NUMBER	TOTAL SQ. FOOTAGE
SUITE 2.9	29,000
SUITE 2.A	20,000

Smoke Compartment	Exit (to) Lobby	Occupant Use
SC 2.1	EXIT TO SUITE 2.9	
SC 2.2	EXIT TO SUITE 2.A	
SC 2.3	EXIT TO SUITE 2.A	

Second Floor

Short-Term Residential Treatment (SRT) - SC2-2

16-20 Beds

An adult inpatient unit providing services to individuals with a mental health diagnosis and/or co-occurring substance abuse diagnosis. SRT provides a high level of care for individuals who are no longer experiencing a psychiatric emergency but who are still in need of additional inpatient treatment prior to community placement. SRT also serves clients waiting for placement at the state hospital.

Average Length of Stay - 3 months

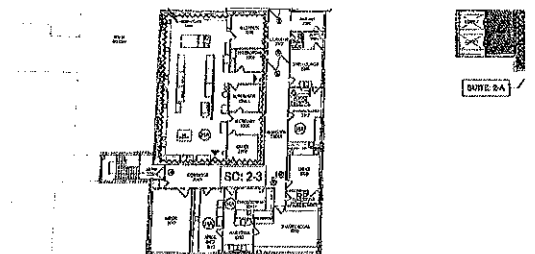
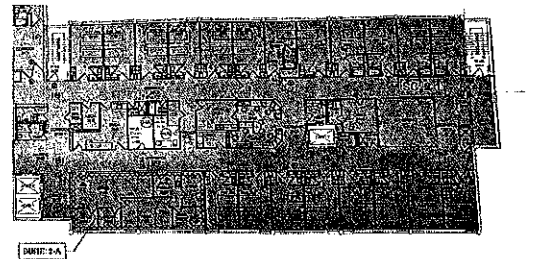
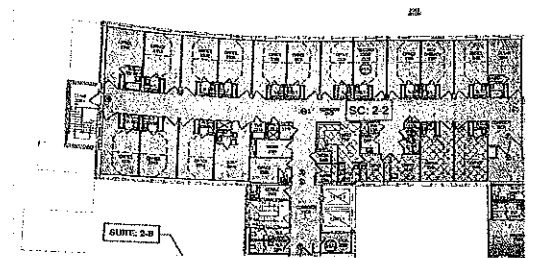
Forensic Residential Treatment Program -SC2-2

30 Beds

An adult residential treatment program for individuals with a mental health diagnosis and involvement in the judicial system. This program provides a less restrictive environment than the state hospitals and assists individuals with successful reintegration into the community.

Average Length of Stay - 6 months

Counseling Offices -SC2-3

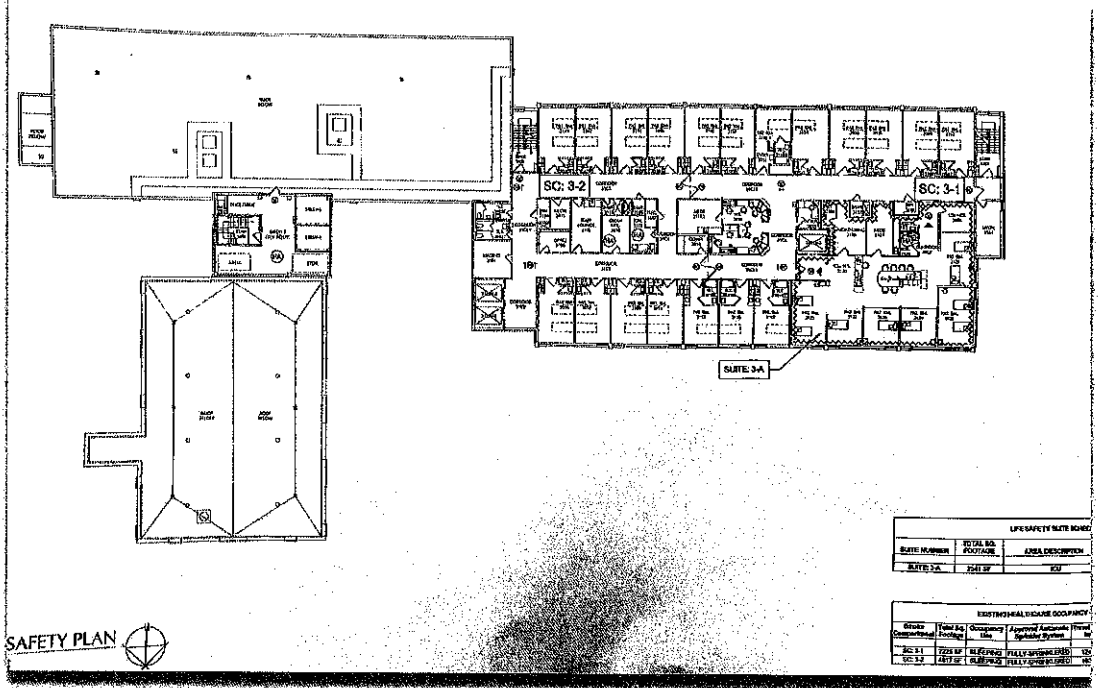


Third Floor

In-Patient Psychiatric Suite

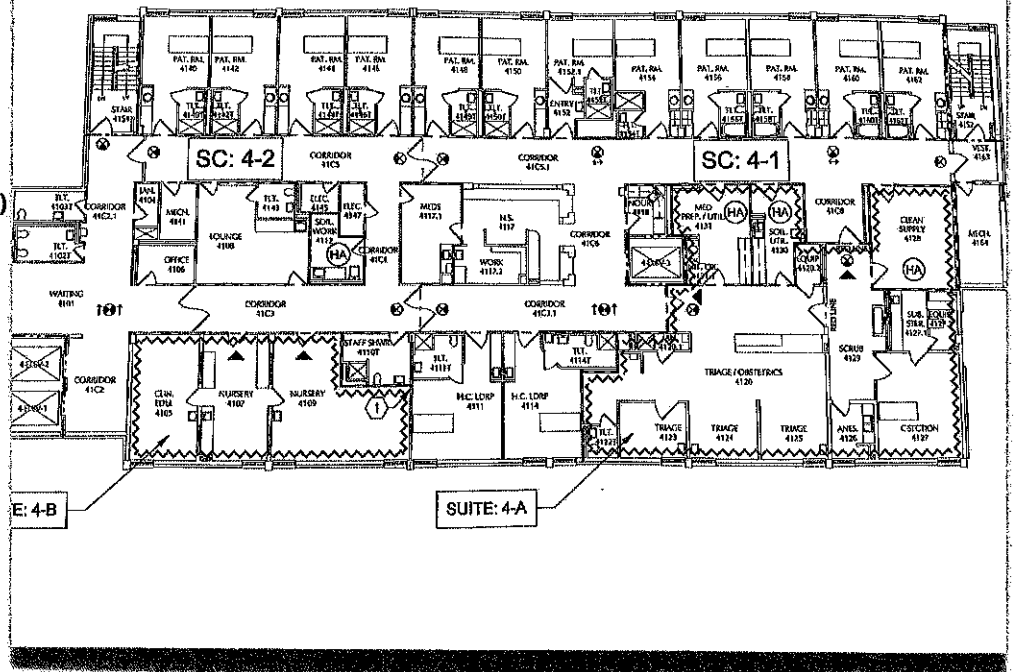
Suite 3-A Used for Dining groups and Group Therapeutic Activities

Largely Self-Contained Wing



Fourth Floor

- Mobile Response Teams
- Community Action Team (CAT)
- Clinical Administration
- Supportive Services for Veteran Families (SSVF)
- Certified Community Behavioral Health Clinic (CCBHC)
- Community Mental Health Center (CMHC)



Community Impact for Columbia County

- Meridian at Lakeshore Hospital provides hospital-level psychiatric care, which is currently only provided outside of the region. This would allow for individuals needing this care to remain within county and permit families to engage in treatment.
- Meridian plans on bringing over 86 FTE positions from the current Lake City campus, with plans to add an additional 98 personnel, for a total of 184 positions for Meridian at Lakeshore Hospital, and 252 for Columbia County.
- Meridian would address the growing need for substance use treatment with an addictions receiving facility, not currently provided in the region.



Meridian at Lakeshore Hospital Authority

Funding Options for Consideration

Lakeshore Hospital Authority Support-

- **Lakeshore Hospital Authority repairs the building to meet occupancy standards at its costs (actual costs) - estimates are above \$6 million +**
- **Meridian occupies hospital and surrounding grounds at no additional occupancy cost for between 7 and 10 years.**
- **Meridian to invest 1 to 3 million to bring internals of the building to licensing standards for services.**
- **Lakeshore Hospital Authority to provide indigent care funding at a minimum for primary care; other services at its direction**
- **Meridian will at its cost maintain the building to meet AHCA/DCF licensing standards throughout the period of the lease**
- **At the end of the lease period; the hospital building and surrounding grounds transfer ownership from Lakeshore Hospital Authority to Meridian at no additional cost**
- **Meridian continues to grow and operate facility for at least the next 50+ years**

Meridian at Lakeshore Hospital Authority

Funding Options for Consideration

Lease -

- LSA Repairs the building to meet occupancy standards at its costs (actual costs) – estimates from above \$6 million +
- Meridian occupies the hospital and surrounding grounds at a negotiated rate for between 7 and 10 years.
- Meridian to invest 1 to 3 million to bring internals of the building to licensing standards
- Lakeshore Hospital Authority to provide indigent care funding for at a minimum primary care; other services at its direction
- Meridian will maintain the building to meet AHCA/DCF licensing standards throughout the period of the lease and will deduct those actual expenses from any lease to Lakeshore Hospital Authority
- At the end of the lease period, the hospital building and surrounding grounds transfer ownership from LSA to Meridian at no additional cost
- Meridian continues to grow and operate facility for at least the next 50+ years

Meridian at Lakeshore Hospital Authority Funding Options for Consideration

Lakeshore Hospital Authority Transfer of Ownership -

- **Meridian takes ownership of the hospital and surrounding grounds with a commitment to operate for its stated purpose for between 7 and 10 years.**
- **Lakeshore Hospital Authority provides \$10 million to repair the building – Meridian to handle the repairs and contractors**
- **Meridian to invest 1 to 3 million additional to bring internals of the building to licensing standards**
- **Lakeshore Hospital Authority to provide indigent care funding for at minimum primary care; other services at its direction**
- **Meridian will maintain the building to meet AHCA/DCF licensing standards throughout the commitment period.**
- **Meridian continues to grow and operate facility for at least the next 50+ years**



Meridian at Lakeshore Hospital



Our collective goal is to better the health and well-being for the communities we serve

While these are but three options; likely there are additional options we have not yet considered. It remains our commitment to partner with Lakeshore Hospital Authority and to find a path forward that supports the needs of both organizations and those we serve

We ask is for the opportunity to sit down and develop a mutually agreeable and supportive agreement that collectively will provide for the citizens of Columbia County for the foreseeable future

